

PRODUCT ID: 40430

Indoor Blank-out LED Backlit Sign

MODEL

SBL1212GR-B242/120-277VAC



DIMENSIONS

12" H x 12" W x 2.5" D (est. 5.006 lbs)

CLASS

Class: SBL Series

Control Method: Switch (not included) or external relay.

CONSTRUCTION

Back Construction: 0.050" Lift-n-Shift Back

Cabinet: 1-piece, corrosion resistant, extruded aluminum frame, 2.5" deep.

Face Material: 1/8" thick, dark grey diffused acrylic

Faces: Single Faced Sign

Finish: Duranodic Bronze

Graphic: Printed graphic applied to surface

ELECTRICAL

Flashing: Not Included

Input Voltage: 120-277 VAC

UL/cUL Listed: Listed

MESSAGE

Color: Black opaque

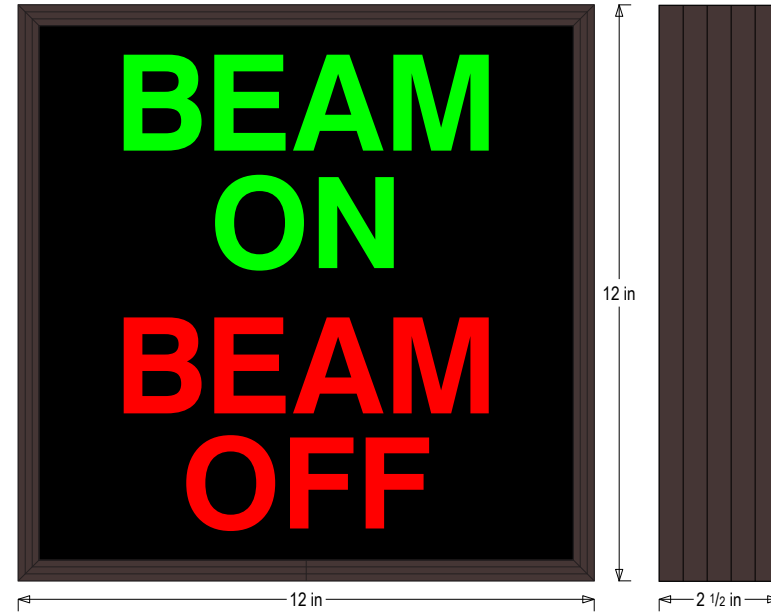
Font: Swiss 721 Bold BT

Illumination: Backlit with LEDs. Message blanks out when off.

Sign Messages: See message table below

Product View

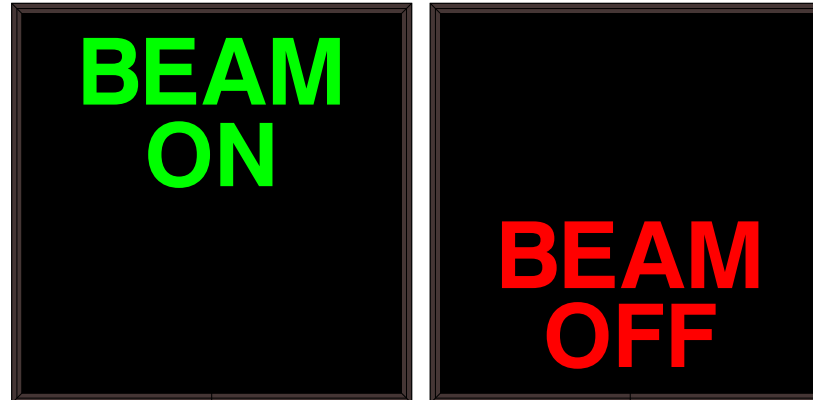
NOTE: Sign image may not exactly represent the finished product. For illustration purposes only.



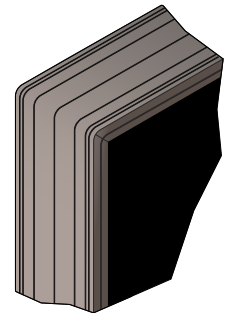
MESSAGE	LED/COLOR	HEIGHT	AMPS
BEAM ON	Green Wide Angle LED	2.0"	0.049-0.021
BEAM OFF	Red Wide Angle LED	2.0"	0.033-0.014

NOTE: Above messages are independently controlled.

Sample Display Options



Frame Detail



Signal-Tech
4985 Pittsburgh Ave.
Erie, PA 16509
Phone: (877) 547-9900
Fax: (814) 835-2300
Email: sales@signal-tech.com
Website: www.signal-tech.com

