

# PRODUCT ID: 51535

## Outdoor Blank-out LED Direct-view Sign

### MODEL

TCL1426GRGR-N069/120-277VAC



### DIMENSIONS

14" H x 26" W x 2.5" D (est. 10.142 lbs)

### CLASS

CLASS: TCL Series

Control Method: Switch (not included) or external relay.

### CONSTRUCTION

Back Construction: 0.050" Lift-n-Shift Back

Cabinet: 1-piece, corrosion resistant, extruded aluminum frame, 2.5" deep.

Face Material: 1/8" impact resistant, smoke-tinted polycarbonate (5109)

Faces: Single Faced Sign

Finish: Duranodic Bronze

Mounting Channel: None

### ELECTRICAL

Flashing: Not Included

Input Voltage: 120-277 VAC

Photodimming: None

UL/cUL Listed: Listed for wet locations

### MESSAGE

Illumination: Super bright direct view LEDs. Message blanks out when off.

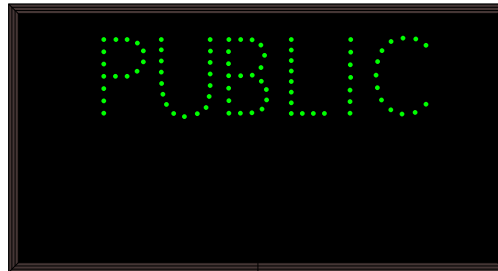
Sign Messages: See message table below

## Product View

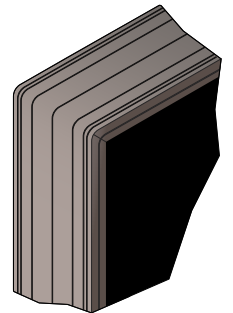
NOTE: Sign image may not exactly represent the finished product. For illustration purposes only.



### Sample Display Options



Frame Detail



| MESSAGE  | LED/COLOR            | HEIGHT | AMPS        |
|----------|----------------------|--------|-------------|
| PUBLIC   | Green Wide Angle LED | 3.875" | 0.067-0.029 |
| CONTRACT | Red Wide Angle LED   | 3.5"   | 0.057-0.025 |
| OPEN     | Green Wide Angle LED | 3.5"   | 0.055-0.024 |
| CLOSED   | Red Wide Angle LED   | 3.5"   | 0.041-0.018 |

NOTE: Above messages are independently controlled.

### Signal-Tech

4985 Pittsburgh Ave.

Erie, PA 16509

Phone: (877) 547-9900

Fax: (814) 835-2300

Email: sales@signal-tech.com

Website: www.signal-tech.com

