

## PRODUCT ID: 38701

### Indoor Blank-out LED Backlit Sign

#### MODEL

SBL1212R-F240/120-277VAC



#### DIMENSIONS

12" H x 12" W x 2.5" D (est. 3.312 lbs)

#### CLASS

Class: SBL Series

Control Method: Switch (not included) or external relay.

#### CONSTRUCTION

Back Construction: 0.050" Lift-n-Shift Back

Cabinet: 1-piece, corrosion resistant, extruded aluminum frame, 2.5" deep.

Face Material: 1/8" thick, dark grey diffused acrylic

Faces: Single Faced Sign

Finish: Duranodic Bronze

Graphic: Printed graphic applied to surface

#### ELECTRICAL

Flashing: Not Included

Input Voltage: 120-277 VAC

UL/cUL Listed: Listed

#### MESSAGE

Color: Black opaque

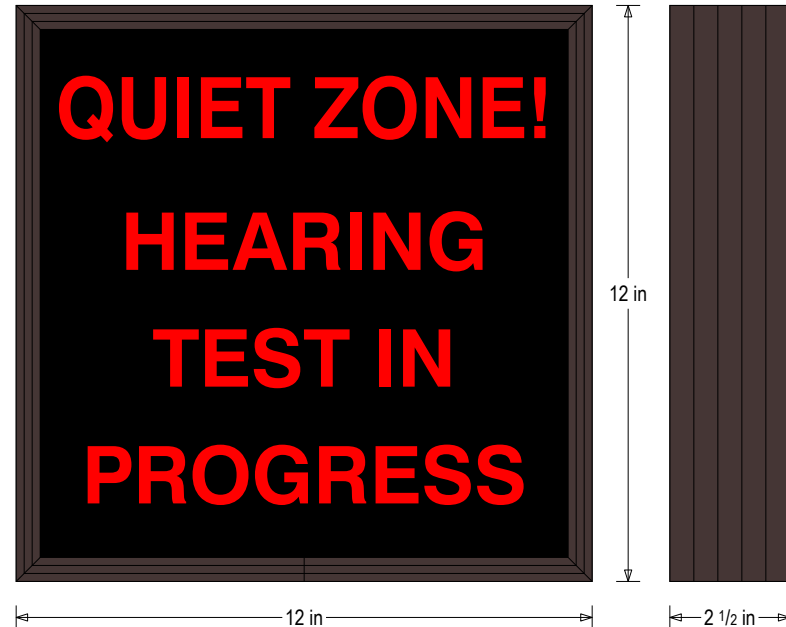
Font: Swiss 721 Bold BT

Illumination: Backlit with LEDs. Message blanks out when off.

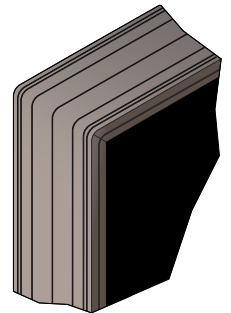
Sign Messages: See message table below

## Product View

NOTE: Sign image may not exactly represent the finished product. For illustration purposes only.



Frame Detail



#### MESSAGE

#### LED/COLOR

#### HEIGHT

#### AMPS

QUIET ZONE! HEARING TEST IN PROGRESS

Red Wide Angle LED

1.5"

0.065-0.028

NOTE: Above messages are independently controlled.

#### Signal-Tech

4985 Pittsburgh Ave.

Erie, PA 16509

Phone: (877) 547-9900

Fax: (814) 835-2300

Email: sales@signal-tech.com

Website: www.signal-tech.com

