

## PRODUCT ID: 41722

Indoor LED Backlit Sign

### MODEL

SBLF811W-193R/12-24VDC



### DIMENSIONS

8" H x 11" W x 2.5" D (est. 2.976 lbs)

### CLASS

Class: SBLF Series

Control Method: Switch (not included) or external relay.

### CONSTRUCTION

Back Construction: 0.050" Lift-n-Shift Back

Cabinet: 1-piece, corrosion resistant, extruded aluminum frame, 2.5" deep.

Face Material: 1/8" thick, impact modified acrylic (0000)

Faces: Single Faced Sign

Finish: Duranodic Bronze

Graphic: Printed graphic applied to surface

### ELECTRICAL

Flashing: Not Included

Input Voltage: 12-24 VDC

UL/cUL Listed: Listed

### MESSAGE

Color: Red translucent

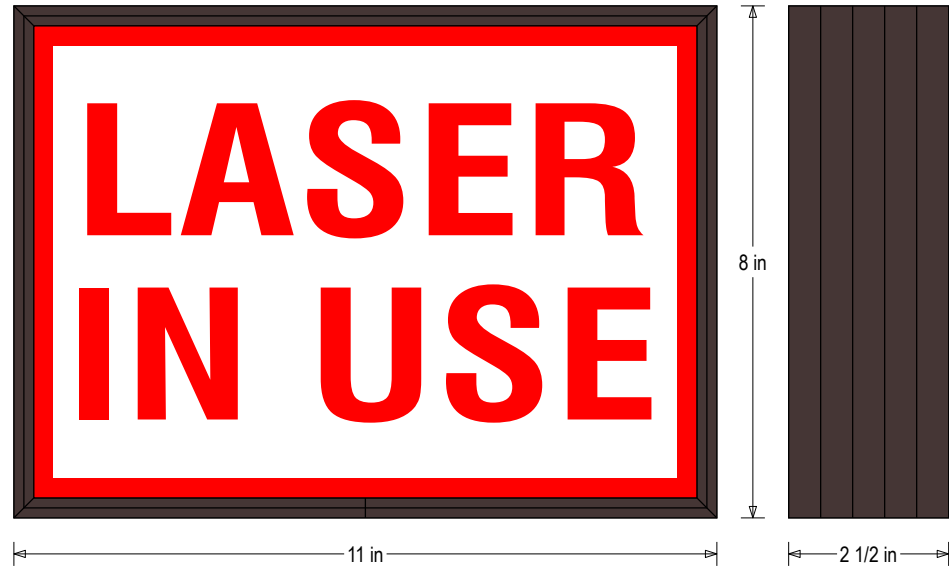
Font: Swiss 721 Bold BT

Illumination: Backlit with white LEDs. Message always visible.

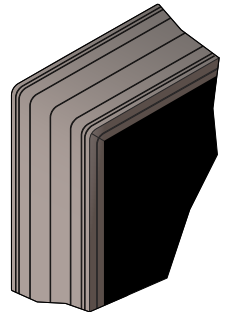
Sign Messages: See message table below

## Product View

NOTE: Sign image may not exactly represent the finished product. For illustration purposes only.



Frame Detail



MESSAGE	LED/COLOR	HEIGHT	AMPS
LASER IN USE	Red Translucent	2.0"	0.590-0.295

NOTE: Above messages are independently controlled.

### Signal-Tech

4985 Pittsburgh Ave.

Erie, PA 16509

Phone: (877) 547-9900

Fax: (814) 835-2300

Email: sales@signal-tech.com

Website: www.signal-tech.com

