

## PRODUCT ID: 56176

### Traffic-Grade LED Blank-Out Sign

#### MODEL

STR3636WR-N889/120-277VAC



#### DIMENSIONS

36" H x 36" W x 6" D (est. 54.948 lbs)

#### CLASS

Class: STO Class

Control Method: Switch (not included) or external relay.

#### CONSTRUCTION

Back Construction: 0.125" Lift-n-Shift Back

Cabinet: 1-piece, corrosion resistant, triple hollow, extruded aluminum frame, 6" deep.

Face Material: 1/8" impact resistant, smoke-tinted polycarbonate (5109)

Faces: Single Faced Sign

Finish: Black

Mounting Channel: None

#### ELECTRICAL

Flashing: Not Included

Input Voltage: 120-277 VAC

Photodimming: Installed

UL/cUL Listed: Listed for wet locations

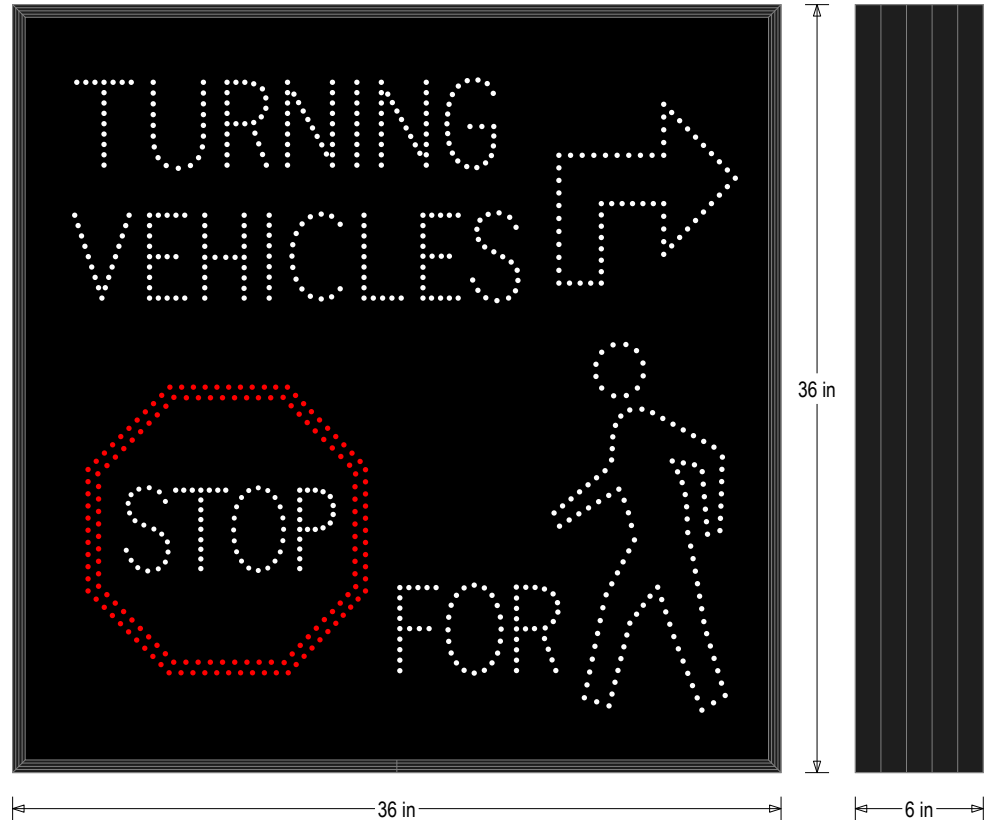
#### MESSAGE

Illumination: Super bright direct view LEDs. Message blanks out when off.

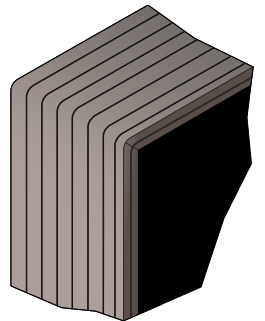
Sign Messages: See message table below

## Product View

NOTE: Sign image may not exactly represent the finished product. For illustration purposes only.



Frame Detail



#### MESSAGE

#### LED/COLOR

#### HEIGHT

#### AMPS

MESSAGE	LED/COLOR	HEIGHT	AMPS
TURNING VEHICLES w/ Right Arrow STOP FOR Pedestrians	White, Red Narrow Angle LED	1.079, 1.079, 1.079, 1.079, 1.125	0.543-0.235

NOTE: Above messages are independently controlled.

#### Signal-Tech

4985 Pittsburgh Ave.

Erie, PA 16509

Phone: (877) 547-9900

Fax: (814) 835-2300

Email: sales@signal-tech.com

Website: www.signal-tech.com

