

# PRODUCT ID: 48588

## Outdoor Blank-out LED Direct-view Sign

### MODEL

TCL77DRR-224/120-277VAC



### DIMENSIONS

7" H x 7" W x 5.5" D (est. 3.811 lbs)

### CLASS

CLASS: TCL Series

Control Method: Switch (not included) or external relay.

### CONSTRUCTION

Back Construction: 0.050" Lift-n-Shift Back

Cabinet: Corrosion resistant, extruded aluminum frame. 5.5" deep, mitered construction.

Face Material: 1/8" impact resistant, smoke-tinted polycarbonate (5109)

Faces: Double Faced Sign

Finish: Duranodic Bronze

Mounting Channel: None

### ELECTRICAL

Flashing: Factory setting 55fpm.

Input Voltage: 120-277 VAC

Photodimming: None

UL/cUL Listed: Listed for wet locations

### MESSAGE

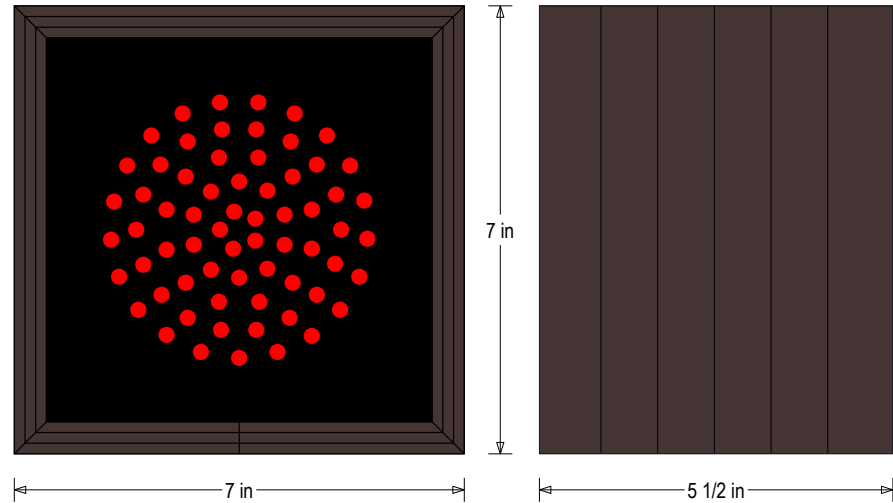
Illumination: Super bright direct view LEDs. Message blanks out when off.

Sign Messages: See message table below

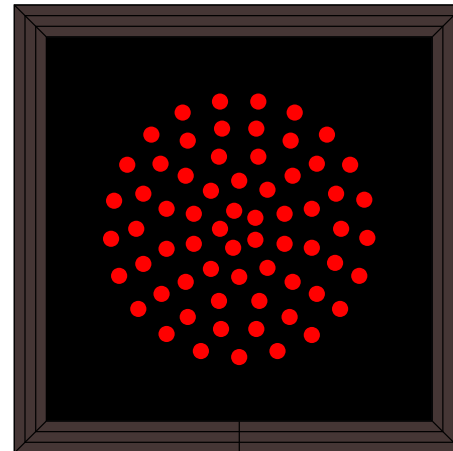
## Product View

NOTE: Sign image may not exactly represent the finished product. For illustration purposes only.

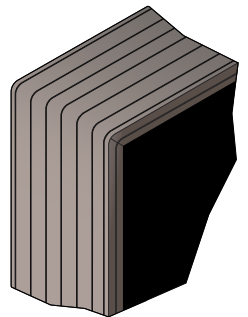
Side A



Side B



Frame Detail



MESSAGE	LED/COLOR	HEIGHT	AMPS
---------	-----------	--------	------

Red Indicator Dot	Red Wide Angle LED	4.0"	0.033-0.014
Red Indicator Dot (Flashing)	Red Wide Angle LED	4.0"	0.033-0.014
Red Indicator Dot	Red Wide Angle LED	4.0"	0.033-0.014
Red Indicator Dot (Flashing)	Red Wide Angle LED	4.0"	0.033-0.014

NOTE: Above messages are independently controlled.

### Signal-Tech

4985 Pittsburgh Ave.

Erie, PA 16509

Phone: (877) 547-9900

Fax: (814) 835-2300

Email: sales@signal-tech.com

Website: www.signal-tech.com

