

PRODUCT ID: 57087

Outdoor Blank-out LED Direct-view Sign

MODEL
TCL77DGG-224/120-277VAC



DIMENSIONS
7" H x 7" W x 5.5" D (est. 3.811 lbs)

CLASS
CLASS: TCL Series
Control Method: Switch (not included) or external relay.

CONSTRUCTION
Back Construction: 0.050" Lift-n-Shift Back
Cabinet: Corrosion resistant, extruded aluminum frame. 5.5" deep, mitered construction.
Face Material: 1/8" impact resistant, smoke-tinted polycarbonate (5109)
Faces: Double Faced Sign
Finish: Duranodic Bronze
Mounting Channel: None

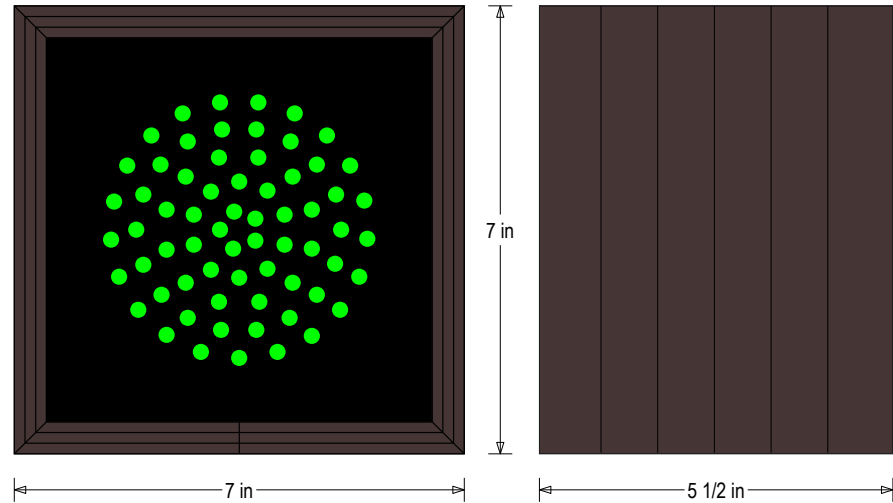
ELECTRICAL
Flashing: Factory setting 55fpm.
Input Voltage: 120-277 VAC
Photodimming: None
UL/cUL Listed: Listed for wet locations

MESSAGE
Illumination: Super bright direct view LEDs. Message blanks out when off.
Sign Messages: See message table below

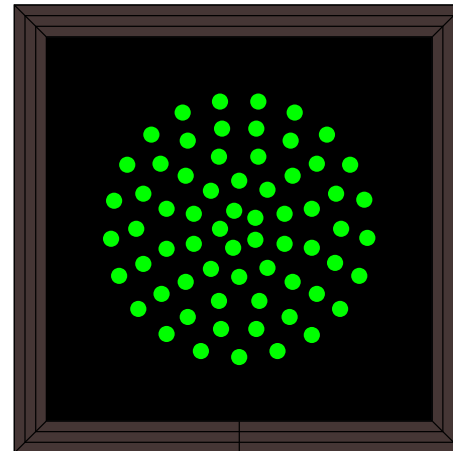
Product View

NOTE: Sign image may not exactly represent the finished product. For illustration purposes only.

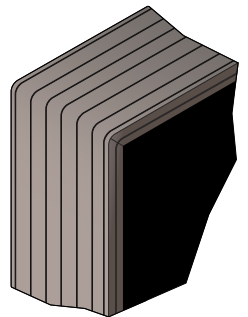
Side A



Side B



Frame Detail



MESSAGE	LED/COLOR	HEIGHT	AMPS
Green Indicator Dot	Green Wide Angle LED	4.0"	0.033-0.014
Green Indicator Dot (Flashing)	Green Wide Angle LED	4.0"	0.033-0.014
Green Indicator Dot	Green Wide Angle LED	4.0"	0.033-0.014
Green Indicator Dot (Flashing)	Green Wide Angle LED	4.0"	0.033-0.014

NOTE: Above messages are independently controlled.

Signal-Tech
4985 Pittsburgh Ave.
Erie, PA 16509
Phone: (877) 547-9900
Fax: (814) 835-2300
Email: sales@signal-tech.com
Website: www.signal-tech.com

