

PRODUCT ID: 57464

Outdoor LED Backlit Sign

MODEL

PHXF811W-O652B/120-277VAC



DIMENSIONS

8" H x 11" W x 2.5" D (est. 0 lbs)

CLASS

CLASS: PHXF Series

Control Method: Switch (not included) or external relay.

CONSTRUCTION

Back Construction: 0.050" Lift-n-Shift Back

Cabinet: 1-piece, corrosion resistant, extruded aluminum frame, 2.5" deep.

Face Material: 1/8" thick, impact modified acrylic (0000)

Faces: Single Faced Sign

Finish: Duranodic Bronze

Graphic: Printed graphic applied to surface

Mounting Channel: None

ELECTRICAL

Flashing: Not Included

Input Voltage: 120-277 VAC

UL/cUL Listed: Listed for wet locations

MESSAGE

Color: Blue translucent

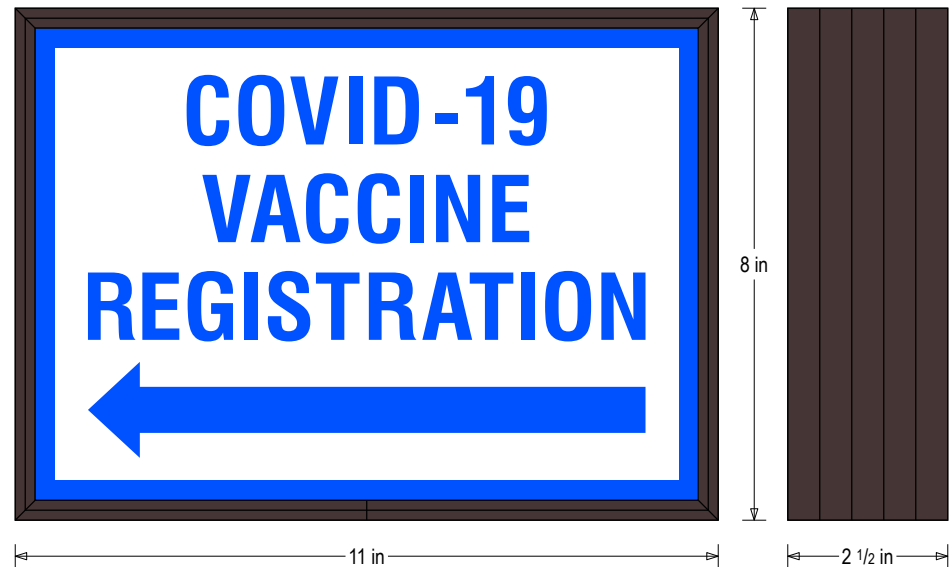
Font: Swiss 721 Bold Condensed BT

Illumination: White high intensity LED backlit. Message always visible.

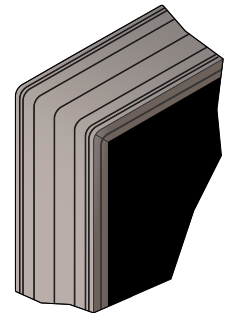
Sign Messages: See message table below

Product View

NOTE: Sign image may not exactly represent the finished product. For illustration purposes only.



Frame Detail



MESSAGE

LED/COLOR

HEIGHT

AMPS

COVID-19 VACCINE REGISTRATION w/ Left Arrow	Blue Translucent, White Wide Angle LED	1.0", 1.5"	0.131-0.057
---	--	------------	-------------

NOTE: Above messages are independently controlled.

Signal-Tech

4985 Pittsburgh Ave.

Erie, PA 16509

Phone: (877) 547-9900

Fax: (814) 835-2300

Email: sales@signal-tech.com

Website: www.signal-tech.com

