

PRODUCT ID: 59716
Indoor LED Backlit Sign

MODEL
SBLF811W-P226BYK/120-277VAC



DIMENSIONS
8" H x 11" W x 2.5" D (est. 0 lbs)

CLASS
Class: SBLF Series
Control Method: Switch (not included) or external relay.

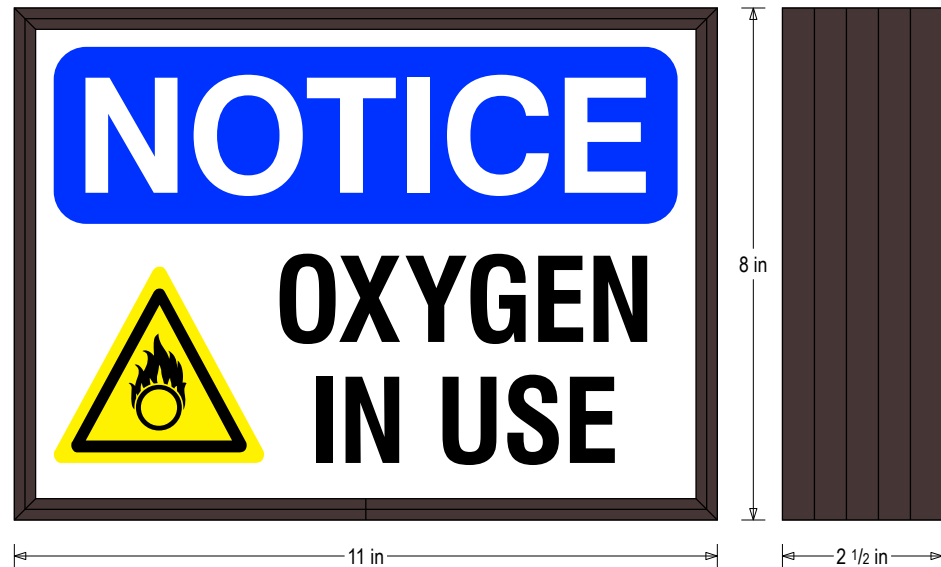
CONSTRUCTION
Back Construction: 0.050" Lift-n-Shift Back
Cabinet: 1-piece, corrosion resistant, extruded aluminum frame, 2.5" deep.
Face Material: 1/8" thick, impact modified acrylic (0000)
Faces: Single Faced Sign
Finish: Duranodic Bronze
Graphic: Printed graphic applied to surface

ELECTRICAL
Flashing: Not Included
Input Voltage: 120-277 VAC
UL/cUL Listed: Listed

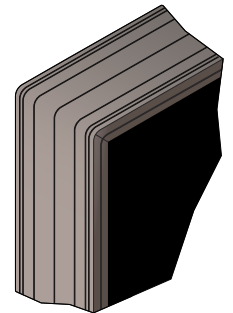
MESSAGE
Color: Refer to message table (Blue Translucent, Yellow Translucent, Black Opaque)
Font: Other: (Swiss 721 Bold BT, Swiss 721 Condensed Bold BT)
Illumination: Backlit with white LEDs. Message always visible.
Sign Messages: See message table below

Product View

NOTE: Sign image may not exactly represent the finished product. For illustration purposes only.



Frame Detail



MESSAGE	LED/COLOR	HEIGHT	AMPS
NOTICE OXYGEN IN USE w/ Oxygen hazard symbol	Blue Translucent, Yellow Translucent, Black Opaque	1.75", 1.375", 3.0"	0.058-0.025

NOTE: Above messages are independently controlled.

Signal-Tech
4985 Pittsburgh Ave.
Erie, PA 16509
Phone: (877) 547-9900
Fax: (814) 835-2300
Email: sales@signal-tech.com
Website: www.signal-tech.com

