

# PRODUCT ID: 17594

## Outdoor Blank-out LED Direct-view Sign

### MODEL

TCL1224GRGR-A364/120-277VAC



### DIMENSIONS

12" H x 24" W x 2.5" D (est. 9.2 lbs)

### CLASS

CLASS: TCL Series

Control Method: Switch (not included) or external relay.

### CONSTRUCTION

Back Construction: 0.050" Lift-n-Shift Back

Cabinet: 1-piece, corrosion resistant, extruded aluminum frame, 2.5" deep.

Face Material: 1/8" impact resistant, smoke-tinted acrylic (5109)

Faces: Single Faced Sign

Finish: Duranodic Bronze

Mounting Channel: None

### ELECTRICAL

Flashing: Not Included

Input Voltage: 120-277 VAC

Photodimming: None

UL/cUL Listed: Listed for wet locations

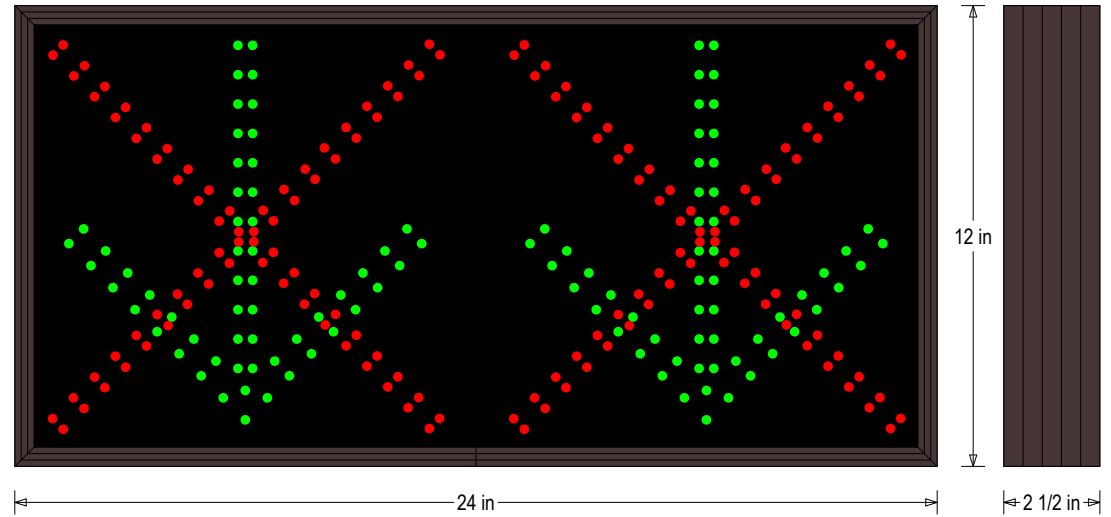
### MESSAGE

Illumination: Super bright direct view LEDs. Message blanks out when off.

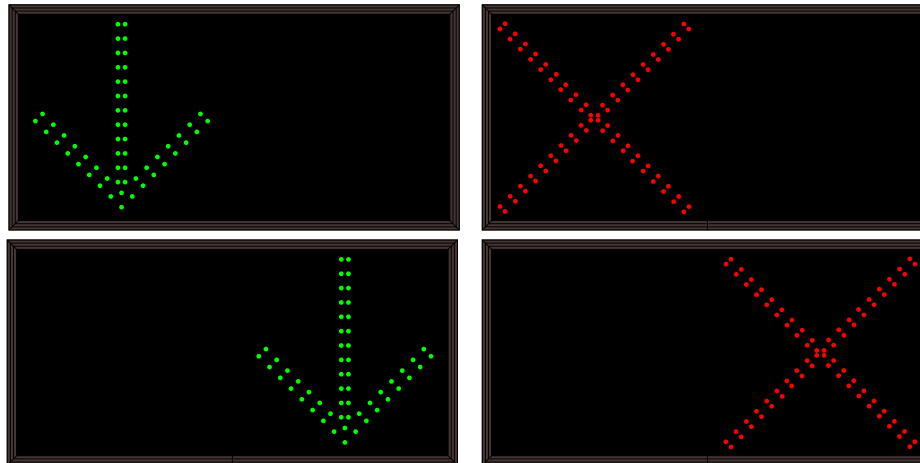
Sign Messages: See message table below

## Product View

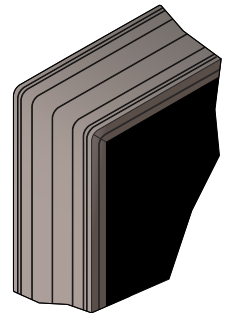
NOTE: Sign image may not exactly represent the finished product. For illustration purposes only.



### Sample Display Options



### Frame Detail



MESSAGE	LED/COLOR	HEIGHT	AMPS
Down Arrow	Green Wide Angle LED	9.5"	0.045-0.020
X	Red Wide Angle LED	9.5"	0.039-0.017
Down Arrow	Green Wide Angle LED	9.5"	0.045-0.020
X	Red Wide Angle LED	9.5"	0.039-0.017

NOTE: Above messages are independently controlled.

**Signal-Tech**  
 4985 Pittsburgh Ave.  
 Erie, PA 16509  
 Phone: (877) 547-9900  
 Fax: (814) 835-2300  
 Email: sales@signal-tech.com  
 Website: www.signal-tech.com

