

PRODUCT ID: 18414

Outdoor Blank-out LED Direct-view Sign

MODEL

TCL718G-A087/120-277VAC



DIMENSIONS

7" H x 18" W x 2.5" D (est. 5.543 lbs)

CLASS

CLASS: TCL Series

Control Method: Switch (not included) or external relay.

CONSTRUCTION

Back Construction: 0.050" Lift-n-Shift Back

Cabinet: 1-piece, corrosion resistant, extruded aluminum frame, 2.5" deep.

Face Material: 1/8" impact resistant, smoke-tinted acrylic (5109)

Faces: Single Faced Sign

Finish: Duranodic Bronze

Mounting Channel: None

ELECTRICAL

Flashing: Not Included

Input Voltage: 120-277 VAC

Photodimming: None

UL/cUL Listed: Listed for wet locations

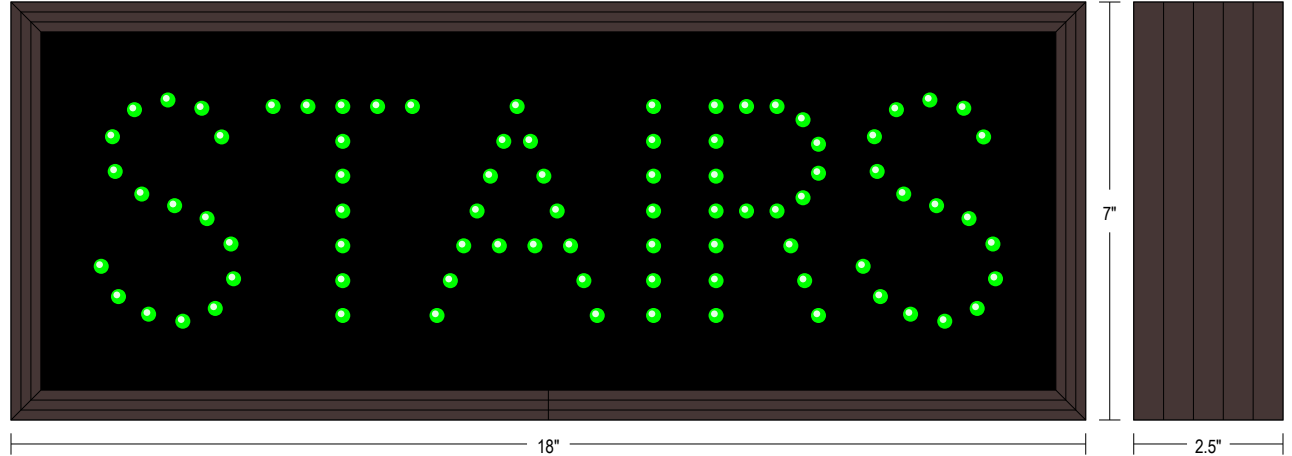
MESSAGE

Illumination: Super bright direct view LEDs. Message blanks out when off.

Sign Messages: See message table below

Product View

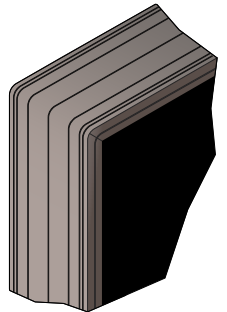
NOTE: Sign image may not exactly represent the finished product. For illustration purposes only.



| MESSAGE | LED/COLOR | HEIGHT | AMPS |
|---------|----------------------|--------|-------------|
| STAIRS | Green Wide Angle LED | 3.5" | 0.067-0.029 |

NOTE: Above messages are independently controlled.

Frame Detail



Signal-Tech

4985 Pittsburgh Ave.

Erie, PA 16509

Phone: (877) 547-9900

Fax: (814) 835-2300

Email: sales@signal-tech.com

Website: www.signal-tech.com

