

## PRODUCT ID: 3052

### Side/Sleeve Mount Bracket

#### MODEL

SM18-SF

#### DIMENSIONS

17" H x 4" W x 2" D (est. 1.795 lbs)

#### CONSTRUCTION

Finish: Duranodic Bronze

Material: 3/16" architectural aluminum angle 6063-T6. Mounting holes pre-drilled.

NOTE: Other LED colors, voltages, cabinet sizes, styles, and colors available.

**Signal-Tech**  
4985 Pittsburgh Ave.  
Erie, PA 16509  
Phone: (877) 547-9900  
Fax: (814) 835-2300  
Email: sales@signal-tech.com  
Website: www.signal-tech.com

**Signal-Tech**

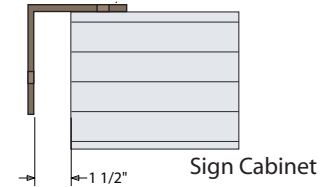
Proudly Made in the USA

Copyright (C) 2017 Signal-Tech

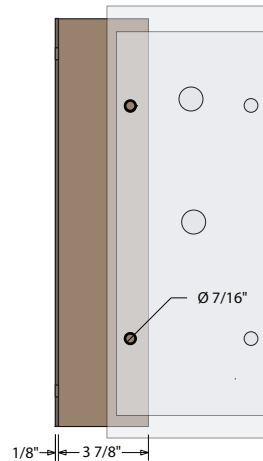
## Product View

NOTE: Sign image may not exactly represent the finished product. For illustration purposes only.

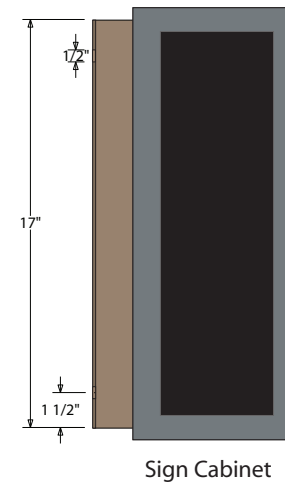
### Top View



### Back View Sign Mounting Surface



### Front View



### Side Mount

- Remove the back panel.
- Mount the ceiling bracket to the desired surface (*Fasteners Not Supplied*).
- Mount the back panel to the bracket (*Fasteners Not Supplied*).
- Hinge cabinet back and replace the screws that were removed in step one on the reverse side.



**Note:** Make appropriate wiring connections per local codes.

**Note:** Do not over tighten or distort back panel. Hang the cabinet on the top edge of the back panel

REV 0 | 10122009 | KM