

Side Mount SM21-SF

PRODUCT NUMBER

3054

DIMENSIONS

20" H x 4" W x 2" D

INSTALLATION METHOD

Bolted to wall surface with appropriate fasteners.

SYSTEM USES

Available for signs up to 26" wide.

CONSTRUCTION

1/8" thick extruded aluminum angle bracket. Painted Duranodic Bronze.

FINISH

Painted Standard Duranodic Bronze. Custom colors available upon request.

Signal-Tech
4985 Pittsburgh Ave.
Erie, PA 16509
Phone: (877) 547-9900
Fax: (814) 835-2300
Email: sales@signal-tech.com
Website: www.signal-tech.com

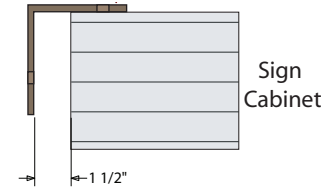


Proudly Made in the USA

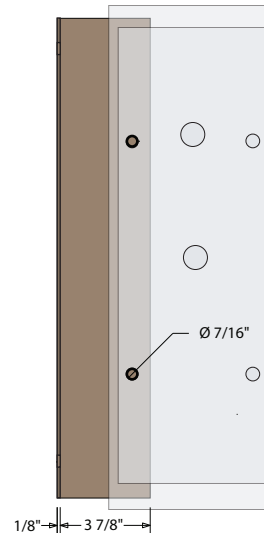
Product View

NOTE: Sign image may not exactly represent the finished product. For illustration purposes only.

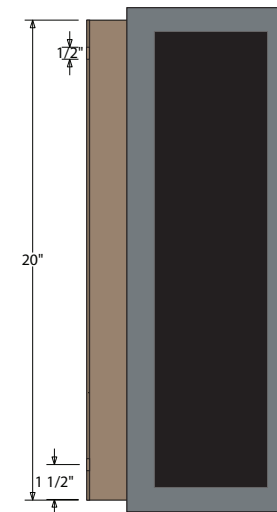
Top View



Back View
Sign Mounting Surface



Front View



Sign Cabinet

Side Mount

- Remove the back panel.
- Mount the ceiling bracket to the desired surface (*Fasteners Not Supplied*).
- Mount the back panel to the bracket (*Fasteners Not Supplied*).
- Hinge cabinet back and replace the screws that were removed in step one on the reverse side.

Note: Make appropriate wiring connections per local codes.



Note: Do not over tighten or distort back panel. Hang the cabinet on the top edge of the back panel