

## Side Mount SM28-SF

### PRODUCT NUMBER

3056

### DIMENSIONS

27" H x 4" W x 2" D

### INSTALLATION METHOD

Bolted to wall surface with appropriate fasteners.

### SYSTEM USES

Available for signs up to 26" wide.

### CONSTRUCTION

1/8" thick extruded aluminum angle bracket. Painted Duranodic Bronze.

### FINISH

Painted Standard Duranodic Bronze. Custom colors available upon request.

### Signal-Tech

4985 Pittsburgh Ave.

Erie, PA 16509

Phone: (877) 547-9900

Fax: (814) 835-2300

Email: sales@signal-tech.com

Website: www.signal-tech.com

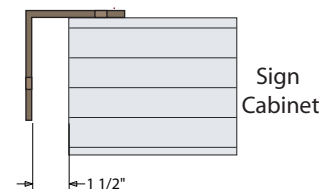


Proudly Made in the USA

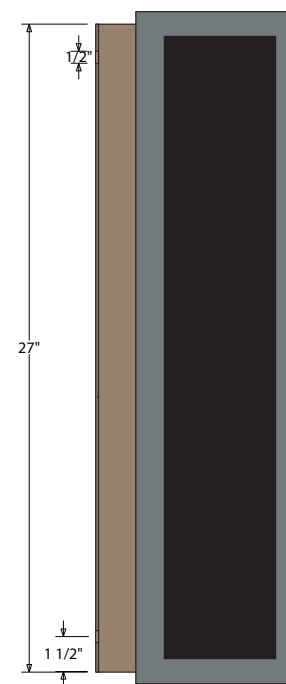
## Product View

NOTE: Sign image may not exactly represent the finished product. For illustration purposes only.

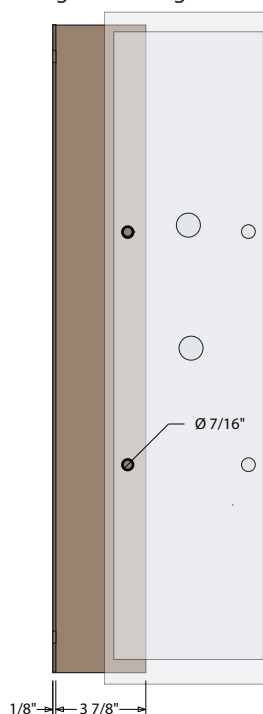
Top View



Front View



Back View  
Sign Mounting Surface



### Side Mount

- Remove the back panel.
- Mount the ceiling bracket to the desired surface (*Fasteners Not Supplied*).
- Mount the back panel to the bracket (*Fasteners Not Supplied*).
- Hinge cabinet back and replace the screws that were removed in step one on the reverse side.

**Note:** Make appropriate wiring connections per local codes.



**Note:** Do not over tighten or distort back panel. Hang the cabinet on the top edge of the back panel