

## PRODUCT ID: 7904

### Outdoor Blank-out LED Direct-view Sign

#### MODEL

TCL187G-B309/120-277VAC



#### DIMENSIONS

18" H x 7" W x 2.5" D (est. 4.683 lbs)

#### CLASS

CLASS: TCL Series

Control Method: Switch (not included) or external relay.

#### CONSTRUCTION

Back Construction: 0.050" Lift-n-Shift Back

Cabinet: 1-piece, corrosion resistant, extruded aluminum frame, 2.5" deep.

Face Material: 1/8" impact resistant, smoke-tinted acrylic (5109)

Faces: Single Faced Sign

Finish: Duranodic Bronze

Mounting Channel: None

#### ELECTRICAL

Flashing: Not Included

Input Voltage: 120-277 VAC

Photodimming: None

UL/cUL Listed: Listed for wet locations

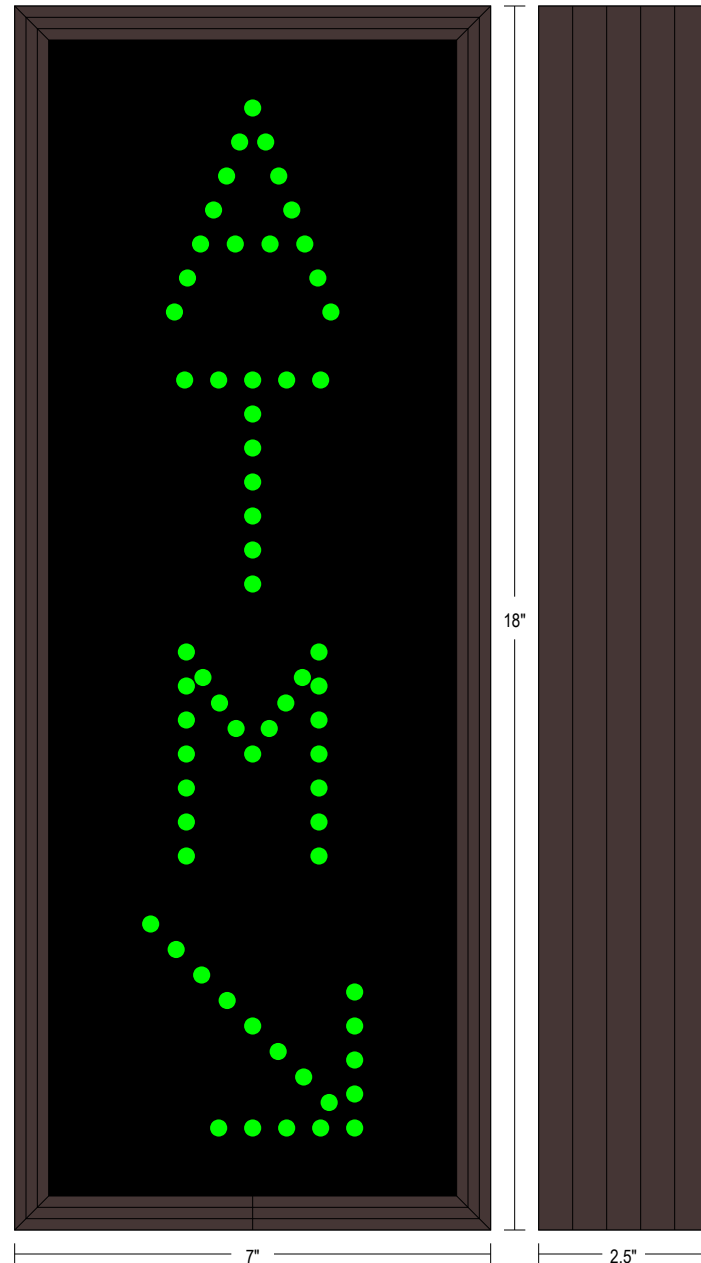
#### MESSAGE

Illumination: Super bright direct view LEDs. Message blanks out when off.

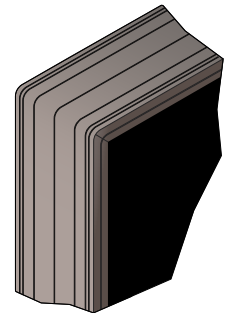
Sign Messages: See message table below

## Product View

NOTE: Sign image may not exactly represent the finished product. For illustration purposes only.



Frame Detail



MESSAGE	LED/COLOR	HEIGHT	AMPS
---------	-----------	--------	------

ATM w/Down Right Arrow	Green Wide Angle LED	3.0"	0.053-0.023
------------------------	----------------------	------	-------------

NOTE: Above messages are independently controlled.

#### Signal-Tech

4985 Pittsburgh Ave.

Erie, PA 16509

Phone: (877) 547-9900

Fax: (814) 835-2300

Email: [sales@signal-tech.com](mailto:sales@signal-tech.com)

Website: [www.signal-tech.com](http://www.signal-tech.com)

