

STR LED SERIES

Wiring Diagram

Low Voltage Only

This sign operates within an input range of 12-24VDC.



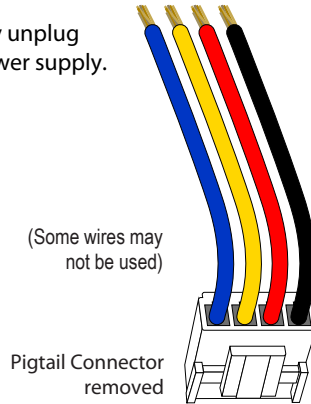
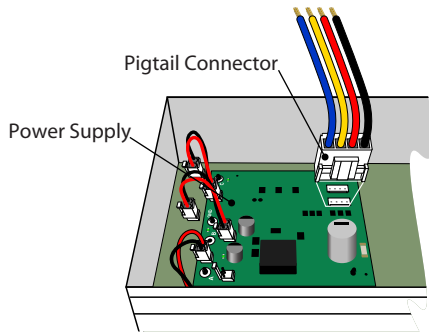
Note: Make appropriate wiring connections per local code.



Always turn off the power prior to installation.

Making your Wiring Connections

1. To make your electrical connections easier, gently unplug the supplied wired pigtail connector from the power supply.



2. With your incoming power already running through the mounted back you can easily make all connections to the pigtail using wire connectors. (See table below for general wiring guidelines)

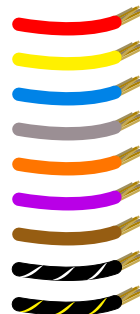
3. Plug the pigtail connector back into the power supply to finish off the electrical part of your installation. The connector is "keyed" and can only be installed in one orientation

4. You're done with the electrical! Time to close up the sign by pushing the cabinet closed and replacing the two screws you removed from the bottom of the cabinet.

Low Voltage ONLY!

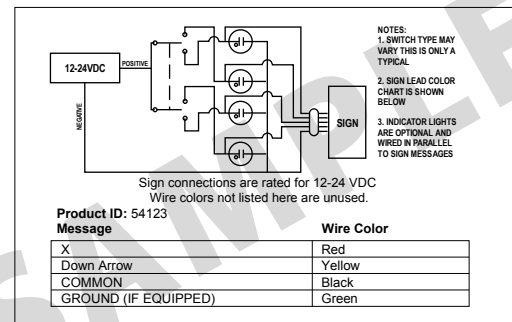
General Wiring Guidelines*

Number of Messages	Typical Wire (Lead) Colors
Message 1	Red
Message 2	Yellow
Message 3	Blue
Message 4	Gray
Message 5	Orange
Message 6	Purple
Message 7	Brown
Message 8	Black with White Stripes
Message 9	Black with Yellow Stripes



*Common is solid Black and Ground is solid Green.

Wiring Label Sample for a typical 2 Message X | Down Arrow Sign

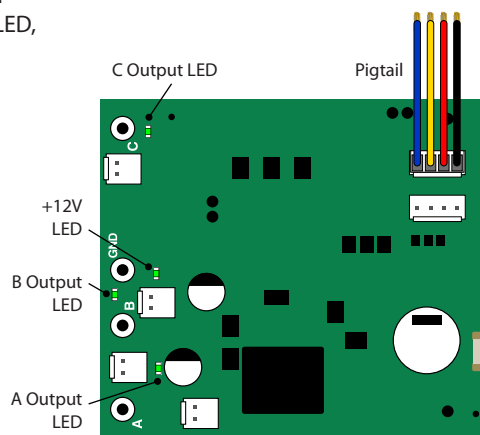


Note: Refer to the wiring label inside the sign for the specific instructions on wiring your sign. Some wires may not be used.

Normal Operation

There are four (4) LEDs on the power supply located close to the connector with the Red and Black wires. These LEDs marked +12V LED, A Output, B Output, and C Output, will illuminate green when 12-24VDC power is applied to the Pigtail.

Check the LED on each power supply since there may be more than one power supply per message.



Note: Make appropriate wiring connections per local code.

Note: Any holes drilled into sign cabinet MUST be sealed. Failure to do so may cause a short and void warranty.

Note: This sign is intended to be installed in accordance with the requirements of Article 600 of the National Electric Code and/or other applicable local codes. This includes proper grounding and bonding of the sign.

Note: This unit contains a built-in CLASS 2 LED driver.

WARNING - Risk of Fire or Electric Shock. Do Not interconnect output terminations.

AVERTISSEMENT - Risque d'incendie ou de choc électrique. Ne pas interconnecter les terminaisons de sortie.