

# PRODUCT ID: 18318

## Outdoor Blank-out LED Direct-view Sign

### MODEL

TCL718DAAAA-H874/120-277VAC



### DIMENSIONS

7" H x 18" W x 5.5" D (est. 6.835 lbs)

### CLASS

CLASS: TCL Series

Control Method: Switch (not included) or external relay.

### CONSTRUCTION

Back Construction: 0.050" Lift-n-Shift Back

Cabinet: Corrosion resistant, extruded aluminum frame. 5.5" deep, mitered construction.

Face Material: 1/8" impact resistant, smoke-tinted polycarbonate (5109)

Faces: Double Faced Sign

Finish: Duranodic Bronze

Mounting Channel: None

### ELECTRICAL

Flashing: Not Included

Input Voltage: 120-277 VAC

Photodimming: None

UL/cUL Listed: Listed for wet locations

### MESSAGE

Illumination: Super bright direct view LEDs. Message blanks out when off.

Sign Messages: See message table below

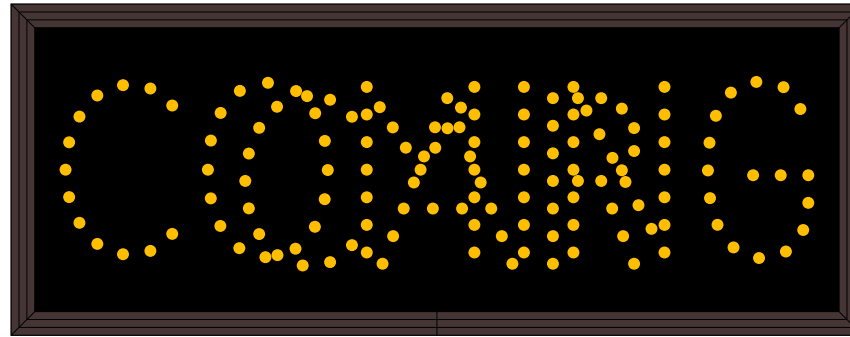
## Product View

NOTE: Sign image may not exactly represent the finished product. For illustration purposes only.

Side A



Side B



Message alternately flashes

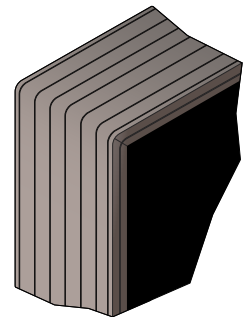
MESSAGE	LED/COLOR	HEIGHT	AMPS
CAR	Amber Wide Angle LED	3.5"	0.024-0.010
COMING	Amber Wide Angle LED	3.5"	0.045-0.020
CAR	Amber Wide Angle LED	3.5"	0.024-0.010
COMING	Amber Wide Angle LED	3.5"	0.045-0.020

NOTE: Above messages are independently controlled.

### Sample Display Options



Frame Detail



Signal-Tech  
4985 Pittsburgh Ave.  
Erie, PA 16509  
Phone: (877) 547-9900  
Fax: (814) 835-2300  
Email: sales@signal-tech.com  
Website: www.signal-tech.com

