

# PRODUCT ID: 25348

## Outdoor Blank-out LED Direct-view Sign

### MODEL

TCL1442RR-F619/120-277VAC



### DIMENSIONS

14" H x 42" W x 2.5" D (est. 14.273 lbs)

### CLASS

CLASS: TCL Series

Control Method: Switch (not included) or external relay.

### CONSTRUCTION

Back Construction: 0.050" Lift-n-Shift Back

Cabinet: 1-piece, corrosion resistant, extruded aluminum frame, 2.5" deep.

Face Material: 1/8" impact resistant, smoke-tinted acrylic (5109)

Faces: Single Faced Sign

Finish: Duranodic Bronze

Mounting Channel: None

### ELECTRICAL

Flashing: Not Included

Input Voltage: 120-277 VAC

Photodimming: None

UL/cUL Listed: Listed for wet locations

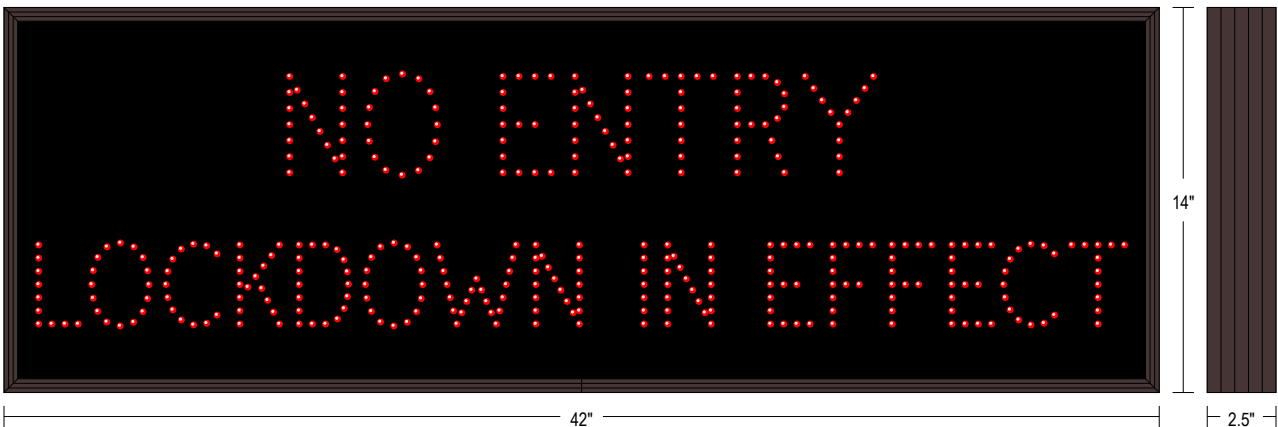
### MESSAGE

Illumination: Super bright direct view LEDs. Message blanks out when off.

Sign Messages: See message table below

## Product View

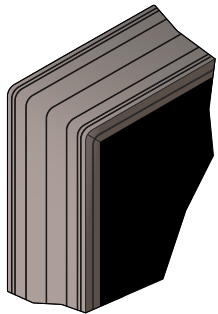
NOTE: Sign image may not exactly represent the finished product. For illustration purposes only.



### Sample Display Options



### Frame Detail



### MESSAGE

### LED/COLOR

### HEIGHT

### AMPS

NO ENTRY	Red Wide Angle LED	3.5"	0.055-0.024
LOCKDOWN IN EFFECT	Red Wide Angle LED	2.875"	0.113-0.049

NOTE: Above messages are independently controlled.

### Signal-Tech

4985 Pittsburgh Ave.

Erie, PA 16509

Phone: (877) 547-9900

Fax: (814) 835-2300

Email: sales@signal-tech.com

Website: www.signal-tech.com

