

## Post

## P90B

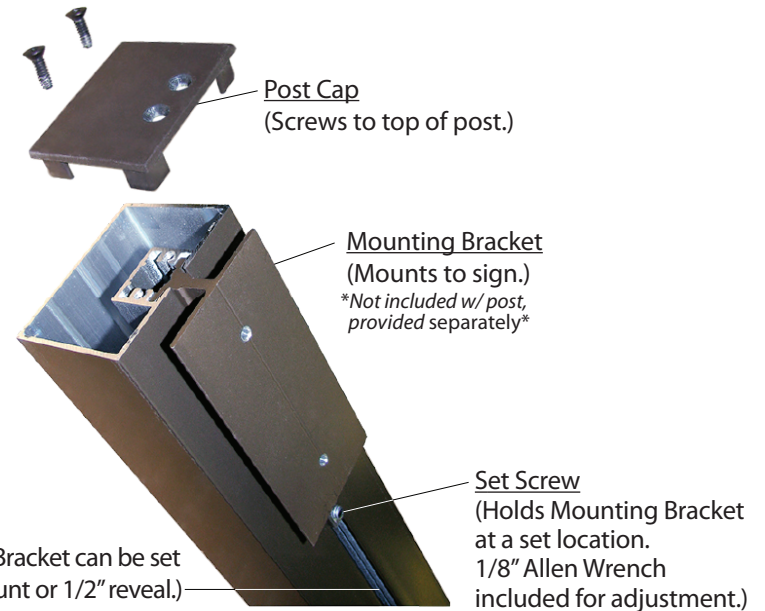
90" H x 6" W x 6" D (est. 13.578 lbs)

**Finish:** Duranodic Bronze

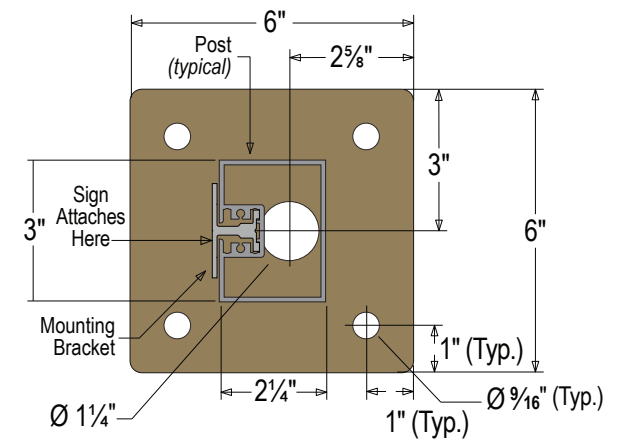
**Material:** 2-1/4"x 3" extruded 6063-T6 aluminum post with one sign mounting channel, end cap and 6" sq. welded aluminum base plate. Base plate is 3/16" thick with pre-drilled anchoring holes. Sign mounting hardware and set screw for securing sign to post included.

### Modular Post:

NOTE: Sign image may not exactly represent the finished product. For illustration purposes only.



### Baseplate Detail



**Signal-Tech**  
4985 Pittsburgh Ave.  
Erie, PA 16509  
Phone: (877) 547-9900  
Fax: (814) 835-2300  
Email: [sales@signal-tech.com](mailto:sales@signal-tech.com)  
**Website: [www.signal-tech.com](http://www.signal-tech.com)**

