

PRODUCT ID: 3052

Side/Sleeve Mount Bracket

MODEL

SM18-SF

DIMENSIONS

17" H x 4" W x 2" D (est. 1.795 lbs)

CONSTRUCTION

Finish: Duranodic Bronze

Material: 3/16" architectural aluminum angle 6063-T6. Mounting holes pre-drilled.

Signal-Tech

4985 Pittsburgh Ave.

Erie, PA 16509

Phone: (877) 547-9900

Fax: (814) 835-2300

Email: sales@signal-tech.com

Website: www.signal-tech.com



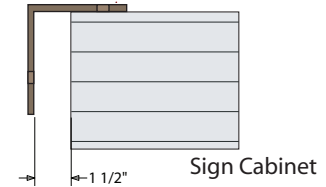
Proudly Made in the USA

Copyright (C) 2018 Signal-Tech

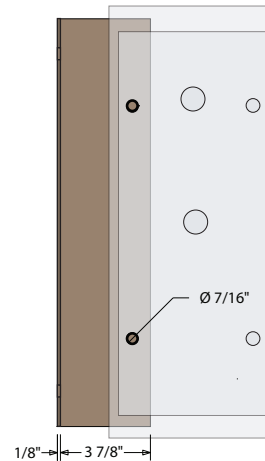
Product View

NOTE: Sign image may not exactly represent the finished product. For illustration purposes only.

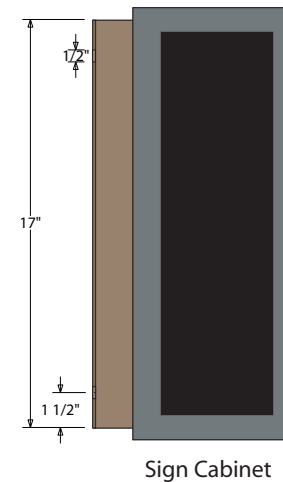
Top View



Back View Sign Mounting Surface



Front View



Side Mount

- Remove the back panel.
- Mount the ceiling bracket to the desired surface (*Fasteners Not Supplied*).
- Mount the back panel to the bracket (*Fasteners Not Supplied*).
- Hinge cabinet back and replace the screws that were removed in step one on the reverse side.

Note: Make appropriate wiring connections per local codes.



Note: Do not over tighten or distort back panel. Hang the cabinet on the top edge of the back panel

REV 0 | 10122009 | KM