

## PRODUCT ID: 3061

### Side/Sleeve Mount Bracket

#### MODEL

SM7-SF

#### DIMENSIONS

6" H x 4" W x 2" D (est. 0.644 lbs)

#### CONSTRUCTION

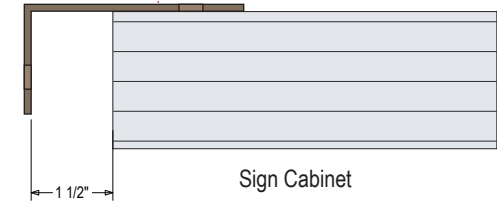
Finish: Duranodic Bronze

Material: 3/16" architectural aluminum angle 6063-T6. Mounting holes pre-drilled.

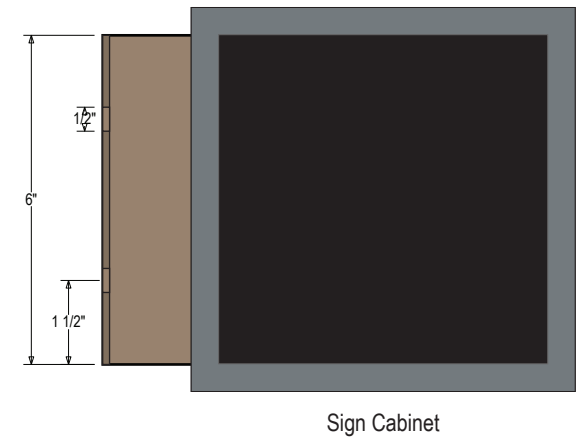
## Product View

NOTE: Sign image may not exactly represent the finished product. For illustration purposes only.

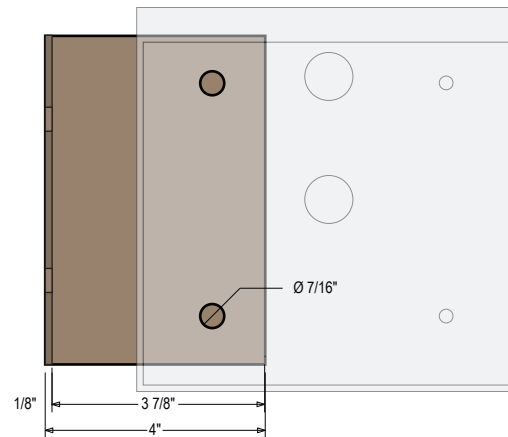
Top View



Front View



Back View  
Sign Mounting Surface



### Side Mount

- Remove the back panel.
- Mount the ceiling bracket to the desired surface (*Fasteners Not Supplied*).
- Mount the back panel to the bracket (*Fasteners Not Supplied*).

**Note:** Make appropriate wiring connections per local codes.



**Note:** Do not over tighten or distort back panel. Hang the cabinet on the top edge of the back panel

- Hinge cabinet back and replace the screws that were removed in step one on the reverse side.

**Signal-Tech**  
4985 Pittsburgh Ave.  
Erie, PA 16509  
Phone: (877) 547-9900  
Fax: (814) 835-2300  
Email: sales@signal-tech.com  
Website: www.signal-tech.com

**Signal-Tech**

Proudly Made in the USA