

PRODUCT ID: 34097

Outdoor Blank-out LED Backlit Sign

MODEL

PHX718DGG-180/120-277VAC



DIMENSIONS

7" H x 18" W x 5.5" D (est. 11.117 lbs)

CLASS

Class: PHX Series

Control Method: Switch (not included) or external relay.

CONSTRUCTION

Cabinet: Corrosion resistant, extruded aluminum frame. 5.5" deep, mitered construction.

Face Material: 1/8" thick, dark grey diffused acrylic

Faces: Double Faced Sign

Finish: Duranodic Bronze

Mounting Channel: None

ELECTRICAL

Flashing: Not Included

Input Voltage: 120-277 VAC

UL/cUL Listed: Listed for wet locations

MESSAGE

Color: Black opaque

Font: Swiss 721 Bold BT

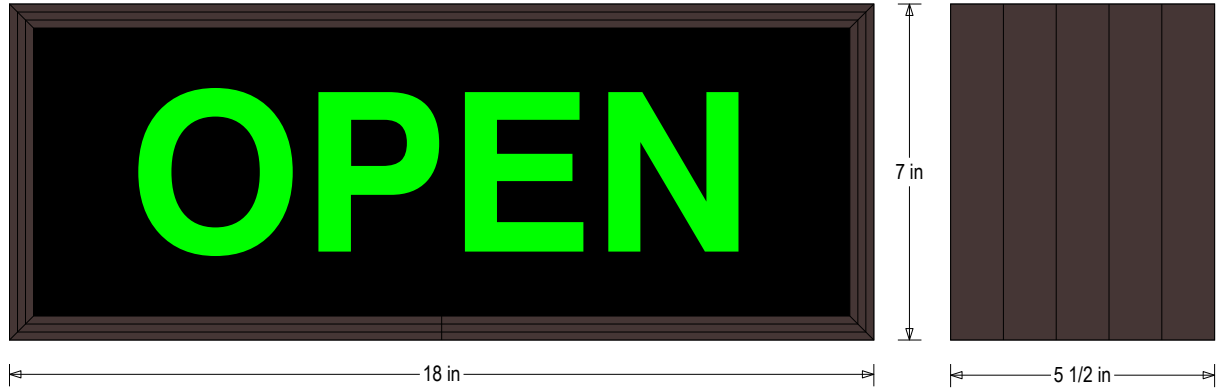
Illumination: Backlit with high intensity LEDs. Message blanks out when off

Sign Messages: See message table below

Product View

NOTE: Sign image may not exactly represent the finished product. For illustration purposes only.

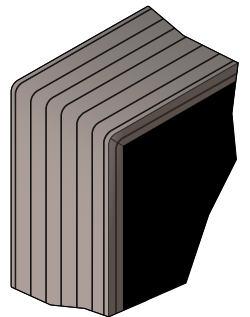
Side A



Side B



Frame Detail



MESSAGE	LED/COLOR	HEIGHT	AMPS
---------	-----------	--------	------

OPEN	Green Wide Angle LED	3.3125"	0.195-0.084
OPEN	Green Wide Angle LED	3.3125"	0.195-0.084

NOTE: Above messages are independently controlled.

Signal-Tech

4985 Pittsburgh Ave.

Erie, PA 16509

Phone: (877) 547-9900

Fax: (814) 835-2300

Email: sales@signal-tech.com

Website: www.signal-tech.com



Proudly Made in the USA