

PRODUCT ID: 38701

Indoor Blank-out LED Backlit Sign

MODEL

SBL1212R-F240/120-277VAC



DIMENSIONS

12" H x 12" W x 2.25" D (est. 3.312 lbs)

CLASS

Class: SBL Series

Control Method: Switch (not included) or external relay.

CONSTRUCTION

Cabinet: 1-piece, corrosion resistant, extruded all-weather frame, 2.25" deep.

Face Material: 1/8" thick, dark grey diffused acrylic

Faces: Single Faced Sign

Finish: Duranodic Bronze

Graphic: Printed graphic applied to surface

ELECTRICAL

Flashing: Not Included

Input Voltage: 120-277 VAC

UL/cUL Listed: Listed

MESSAGE

Color: Black opaque

Font: Swiss 721 Bold BT

Illumination: Backlit with LEDs. Message blanks out when off.

Sign Messages: See message table below

MESSAGE	LED/COLOR	HEIGHT	AMPS
QUIET ZONE! HEARING TEST IN PROGRESS	Red Wide Angle LED	1.5"	0.065-0.028

NOTE: Above messages are independently controlled.

Signal-Tech

4985 Pittsburgh Ave.

Erie, PA 16509

Phone: (877) 547-9900

Fax: (814) 835-2300

Email: sales@signal-tech.com

Website: www.signal-tech.com

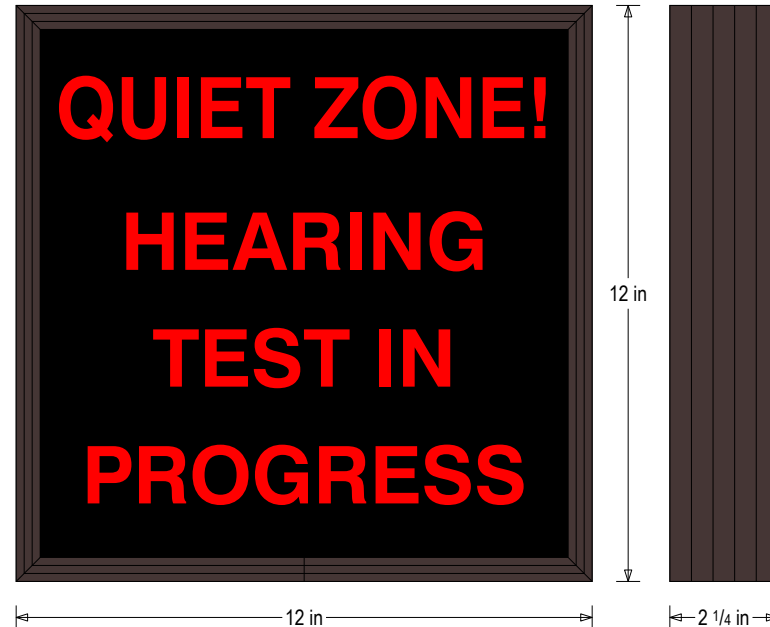


Proudly Made in the USA

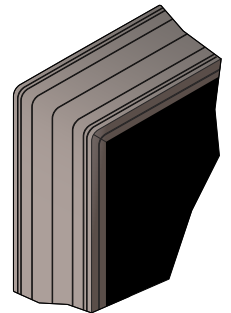
Copyright (C) 2021 Signal-Tech

Product View

NOTE: Sign image may not exactly represent the finished product. For illustration purposes only.



Frame Detail



07142020 | DP