

## PRODUCT ID: 38793

### Indoor Blank-out LED Backlit Sign

#### MODEL

SBL1418RG-I837



#### DIMENSIONS

14" H x 18" W x 2.25" D (est. 6.336 lbs)

#### CLASS

Class: SBL Series

Control Method: Switch (not included) or external relay.

#### CONSTRUCTION

Cabinet: 1-piece, corrosion resistant, extruded all-weather frame, 2.25" deep.

Face Material: 1/8" thick, dark grey diffused acrylic

Faces: Single Faced Sign

Finish: Duranodic Bronze

#### ELECTRICAL

Flashing: Not Included

Input Voltage: 120-277 VAC

UL/cUL Listed: Listed

#### MESSAGE

Color: Black opaque

Font: Swiss 721 Bold BT

Illumination: Backlit with LEDs. Message blanks out when off.

Sign Messages: See message table below

## Product View

NOTE: Sign image may not exactly represent the finished product. For illustration purposes only.



MESSAGE	LED/COLOR	HEIGHT	AMPS
DANGER LASER ON w/Symbol	Red Wide Angle LED	4.0", 1.75", 1.5"	0.059-0.026
NO HAZARD LASER OFF	Green Wide Angle LED	4.0", 1.125", 1.25", 1.0"	0.088-0.038

NOTE: Above messages are independently controlled.

#### Signal-Tech

4985 Pittsburgh Ave.

Erie, PA 16509

Phone: (877) 547-9900

Fax: (814) 835-2300

Email: sales@signal-tech.com

Website: www.signal-tech.com



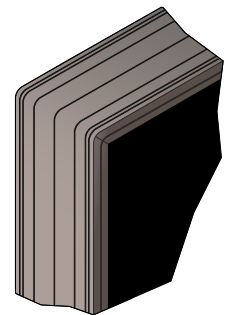
Proudly Made in the USA

Copyright (C) 2020 Signal-Tech

### Sample Display Options



### Frame Detail



07142020 | DP