

## PRODUCT ID: 46556

### Outdoor Blank-out LED Direct-view Sign

#### MODEL

TCL1642RRG-M018/12-24VDC



#### DIMENSIONS

16" H x 42" W x 2.5" D (est. 15.956 lbs)

#### CLASS

CLASS: TCL Series

Control Method: Switch (not included) or external relay.

#### CONSTRUCTION

Cabinet: 1-piece, corrosion resistant, extruded aluminum frame, 2.5" deep.

Face Material: 1/8" impact resistant, smoke-tinted polycarbonate (5109)

Faces: Single Faced Sign

Finish: Duranodic Bronze

Mounting Channel: None

#### ELECTRICAL

Flashing: Not Included

Input Voltage: 12-24 VDC

UL/cUL Listed: Listed for wet locations

#### MESSAGE

Illumination: Super bright direct view LEDs. Message blanks out when off.

Sign Messages: See message table below

## Product View

NOTE: Sign image may not exactly represent the finished product. For illustration purposes only.



#### MESSAGE

#### LED/COLOR

#### HEIGHT

#### AMPS

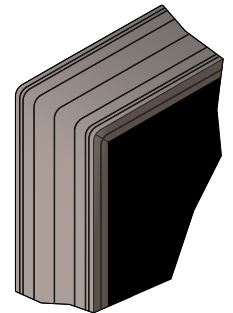
MESSAGE	LED/COLOR	HEIGHT	AMPS
LOCKDOWN EMERGENCY	Red Wide Angle LED	5.0"	2.187-1.093
DO NOT ENTER	Red Wide Angle LED	5.0"	1.267-0.633
WELCOME	Green Wide Angle LED	5.0"	1.467-0.733

NOTE: Above messages are independently controlled.

#### Sample Display Options



#### Frame Detail



#### Signal-Tech

4985 Pittsburgh Ave.

Erie, PA 16509

Phone: (877) 547-9900

Fax: (814) 835-2300

Email: sales@signal-tech.com

Website: www.signal-tech.com

