

## PRODUCT ID: 48333

### Outdoor Blank-out LED Backlit Sign

#### MODEL

PHX742GGR-230/120-277VAC



#### DIMENSIONS

7" H x 42" W x 2.5" D (est. 8.859 lbs)

#### CLASS

Class: PHX Series

Control Method: Switch (not included) or external relay.

#### CONSTRUCTION

Cabinet: 1-piece, corrosion resistant, extruded aluminum frame, 2.5" deep.

Face Material: 1/8" thick, dark grey diffused acrylic

Faces: Single Faced Sign

Finish: Duranodic Bronze

Graphic: Printed graphic applied to surface

Mounting Channel: None

#### ELECTRICAL

Flashing: Not Included

Input Voltage: 120-277 VAC

UL/cUL Listed: Listed for wet locations

#### MESSAGE

Color: Black opaque

Font: Swiss 721 Bold BT

Illumination: Backlit with high intensity LEDs. Message blanks out when off

Sign Messages: See message table below

## Product View

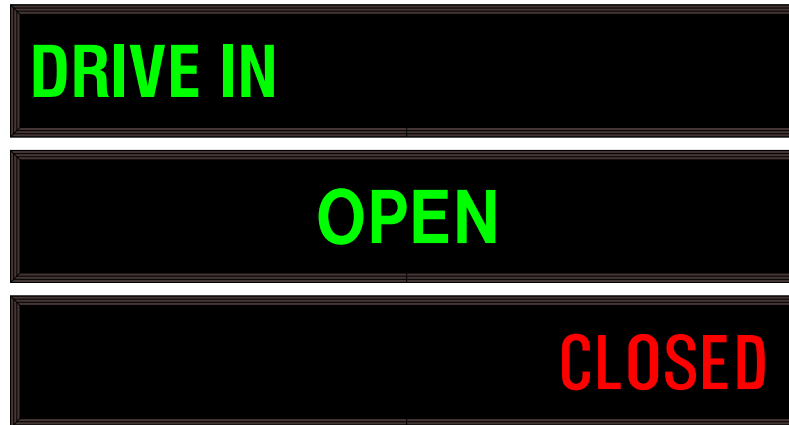
NOTE: Sign image may not exactly represent the finished product. For illustration purposes only.



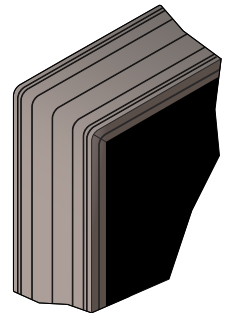
MESSAGE	LED/COLOR	HEIGHT	AMPS
DRIVE IN	Green Wide Angle LED	3.0"	0.173-0.075
OPEN	Green Wide Angle LED	3.0"	0.131-0.057
CLOSED	Red Wide Angle LED	3.0"	0.087-0.038

NOTE: Above messages are independently controlled.

### Sample Display Options



### Frame Detail



#### Signal-Tech

4985 Pittsburgh Ave.

Erie, PA 16509

Phone: (877) 547-9900

Fax: (814) 835-2300

Email: sales@signal-tech.com

Website: www.signal-tech.com

