

Post

P60B-HR2x3

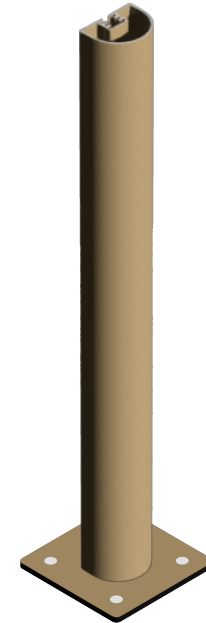
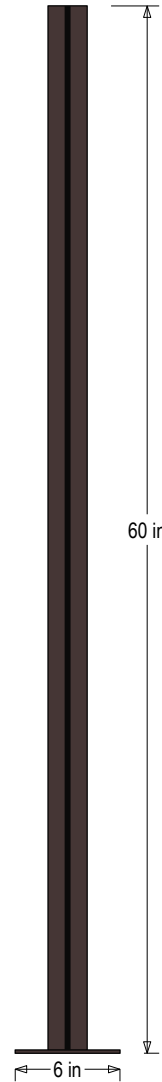
60" H x 6" W x 6" D (est. 6.639 lbs)

Finish: Duranodic Bronze

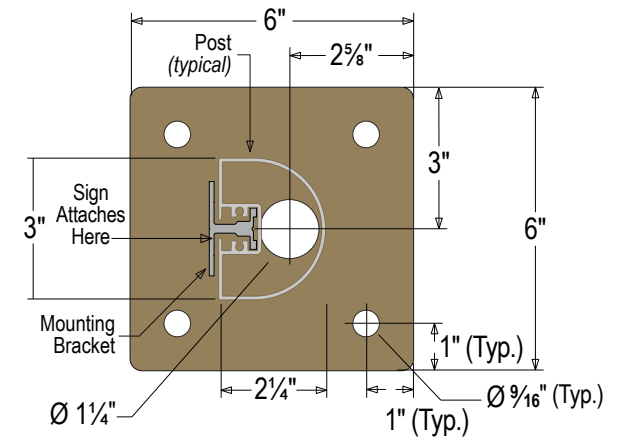
Material: 2-1/4"x 3" D-shaped extruded 6063-T6 aluminum post with one sign mounting channel, end cap and 6" sq. welded aluminum base plate. Base plate is 3/16" thick with pre-drilled anchoring holes.

Modular Post:

NOTE: Sign image may not exactly represent the finished product. For illustration purposes only.



Baseplate Detail



Signal-Tech
4985 Pittsburgh Ave.
Erie, PA 16509
Phone: (877) 547-9900
Fax: (814) 835-2300
Email: sales@signal-tech.com
Website: www.signal-tech.com

